



G3400

Type:4FXS+4PSTN
Ethernet:1WAN+3LAN
Protocol:SIP+H.323

G3800

Type:8FXS+8PSTN
Ethernet:1WAN+3LAN
Protocol:SIP+H.323

Voice feature

- Compatible SIP (RFC3261) & H.323
- Support SIP & H.323 simultaneous calls
- Register up to 4 Server simultaneously
- Voice CODEC:
 - G.711 A-law / u-law, (64kbps)
 - G.723.1, (5.3 or 6.3kbps)
 - G.726, (ADPCM 40, 32, 24, 16 kbps)
 - G.729a/G.729, (8kbps)
- Support CNG, VAD, G.168, jitter buffer
- Support T.38 FAX Relay (9.6k, 14.4k)
- DTMF, FSK Caller ID detection and generation
- Support Caller ID Restriction (CLIR)
- NAT Traversal
 - Outbound Proxy
 - STUN Server
- IP screening table for authorized VoIP call in (require Allwin's SIP Proxy)
- Single Number / Account for multiple ports
- Recordable greeting message

Special feature

- IP/PSTN Dual Access –Incoming and outgoing calls from both IP and PSTN networks use the same RJ-11 port.
- Smart routing select between VoIP and PSTN by prefix number. (Without second dial)
- Automatic reroute the call via PSTN when VoIP failure with warning sound or greeting message.
- Direct analog bypass route when call between Line and Phone
- Support call waiting notice when VoIP talking.
- Failsafe mechanism (FXS relay to PSTN):
 - Network Failure
 - Server unreachable
 - Power loss

Maintenance

- Configuration/Upgrade by Web-GUI or Auto Provision Server.
- CDR exportable
- WAN IP configuration by IVR via phone set.
- Ping test via Web-GUI
- Reset button
- Build-in watching dog for auto recovery

Router feature

- Support static & dynamic IP from DHCP, PPPoE
- Build-in DHCP Server and Client
- Dynamic DNS Support
- Support Network access rules (LAN to WAN & WAN to LAN)
- Self-Protection against DoS Attacks
- Supported Protocol: UDP, TCP, NAT, BOOTP, TFTP, FTP, HTTP, TELNET, IEEE 802.3/ IEEE 802.3u
- Support SNMP, SNTP, HTTP, NAT, DNS, uPnP, DDNS
- NAT function: Virtual Server, Port mapping, ALG, DMZ, Static routing table
- Firewall option: Client filtering, URL filtering, MAC control, Drop Port scans
- VPN Pass-through (PPTP& IPsec)
- VPN client support! (PPTP & L2TP)
- Support QoS (ToS& DSCP) for VoIP

General specifications

LED Indicators: READY, STATUS, POWER, PHONE, LINE, LAN and WAN.
Power: AC100V-240V, DC 12V/1.6A (Max)
Temperature:
0°C to 45°C (Operation),
-25°C to 75°C (Storage)
Humidity: up to 90% non-condensing
Dimension: 233x 153 x 46 mm (W/D/H)
Weight: 1.5Kg
Emissions : CE/FCC Mark

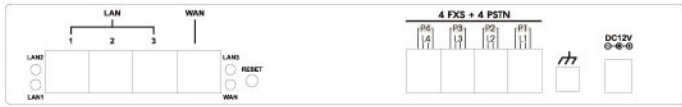
Order Information

- G3400:4FXS+4PSTN,4 Voice channel,1WAN+3LAN VoIP Router
- G3800:8FXS+8PSTN,8 Voice channel,1WAN+3LAN VoIP Router

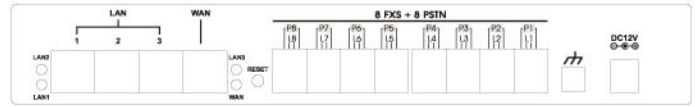
全穎科技股份有限公司 ALLWIN TECH. CO., LTD.

台灣省台北縣三重市興德路111-7號11樓
11F, NO. 111-7, Hsing De Rd., San Chung City, Taipei Hsien, Taiwan.
TEL: 886-2-85123390 FAX:886-2-85123391
Email: sales@allwin.com.tw
http://www.allwin.com.tw

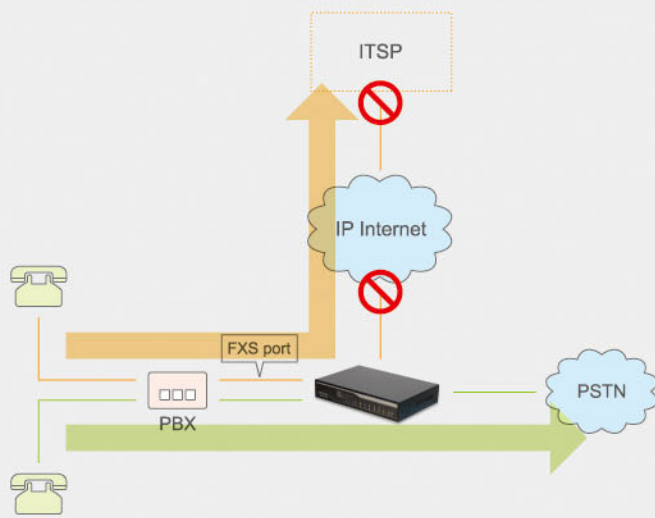
G3400



G3800

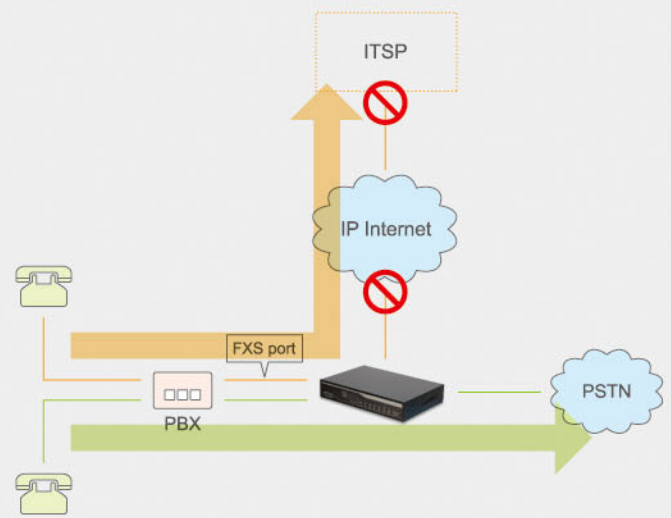


Smart Dialing



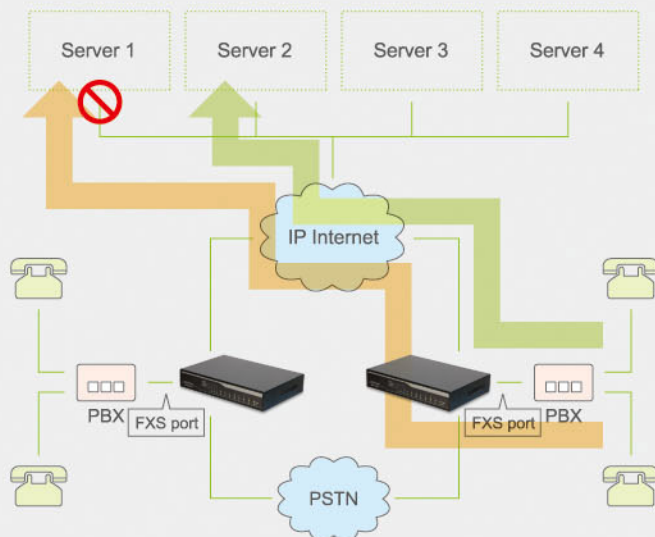
• The GW will auto reroute the call via PSTN when VoIP failure (without second dial)

Failsafe



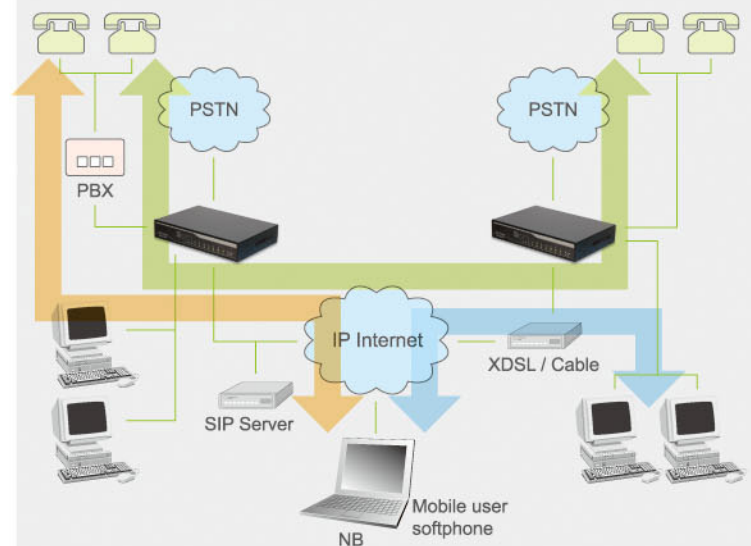
• The GW support 3 type of failsafe (FXS relay to PSTN): Network failure, Server unreachable and power failure.

ITSP/ISR Network



• The GW support integrate up to 4 servers, If the server 1 failed than will auto reroute to other available server.

SMB VoIP Network



• The GW have easy installation and maintenance without change PBX's configuration, it also provide CDR exportation.